

A4.1.1 PARTIAL PLAN: NEW ADMINISTRATION

Congregation B'nai Shalom - Sanctuary + Classroom Renovation | Walnut Creek, California

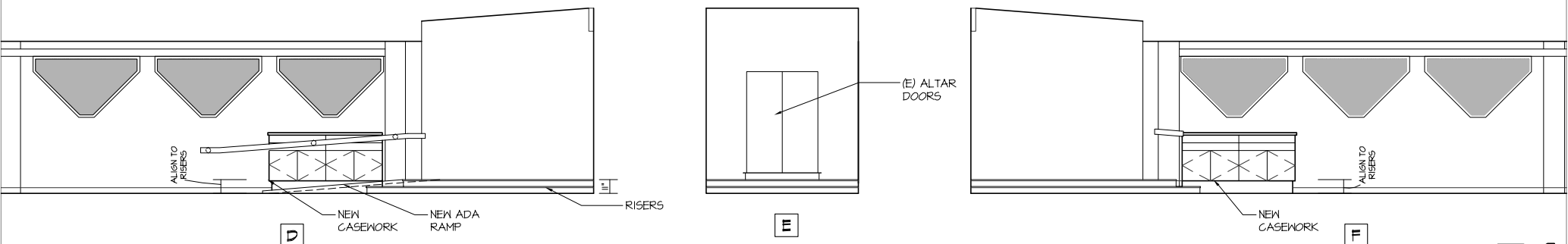
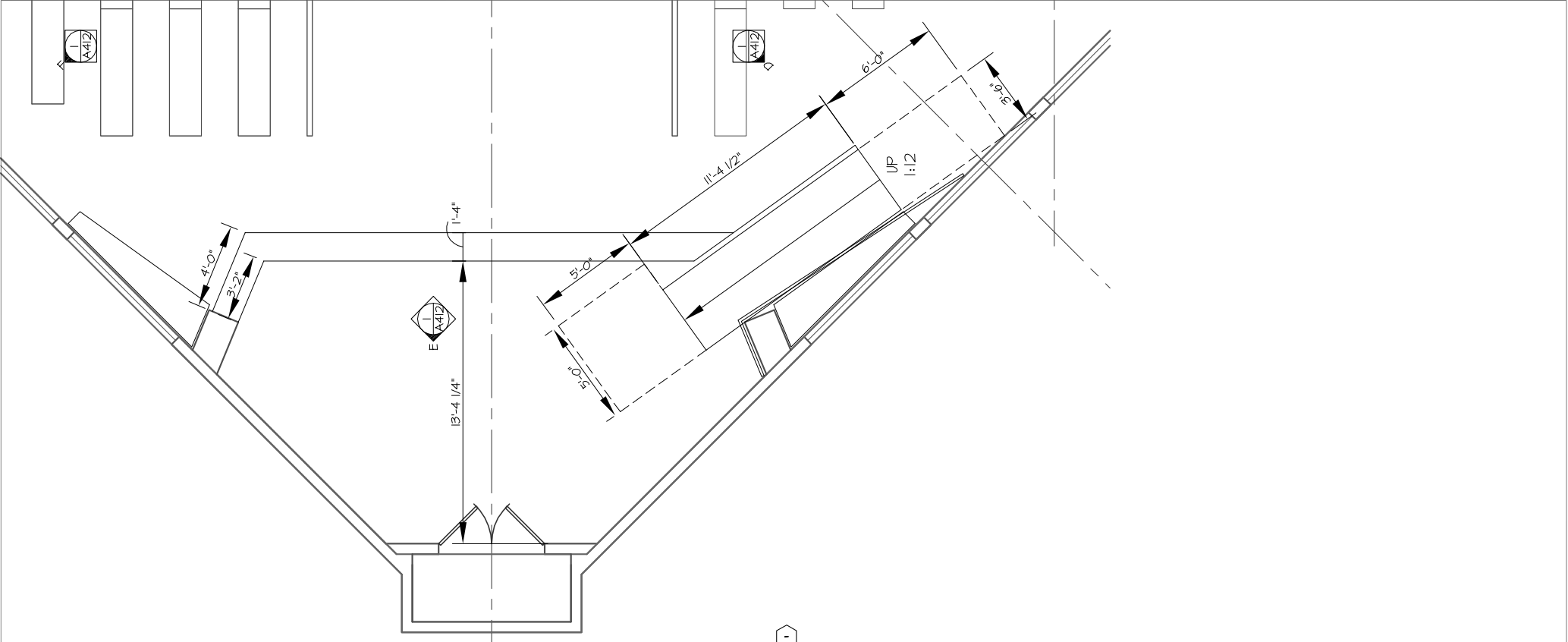
03/03/2008

NOT TO SCALE



KAVA MASSIH ARCHITECTS

2830 Ninth Street | Berkeley, CA 94710
95 Federal | San Francisco, CA 94107



A4.1.2 PARTIAL PLAN AND ELEVATIONS: SANCTUARY BIMAH

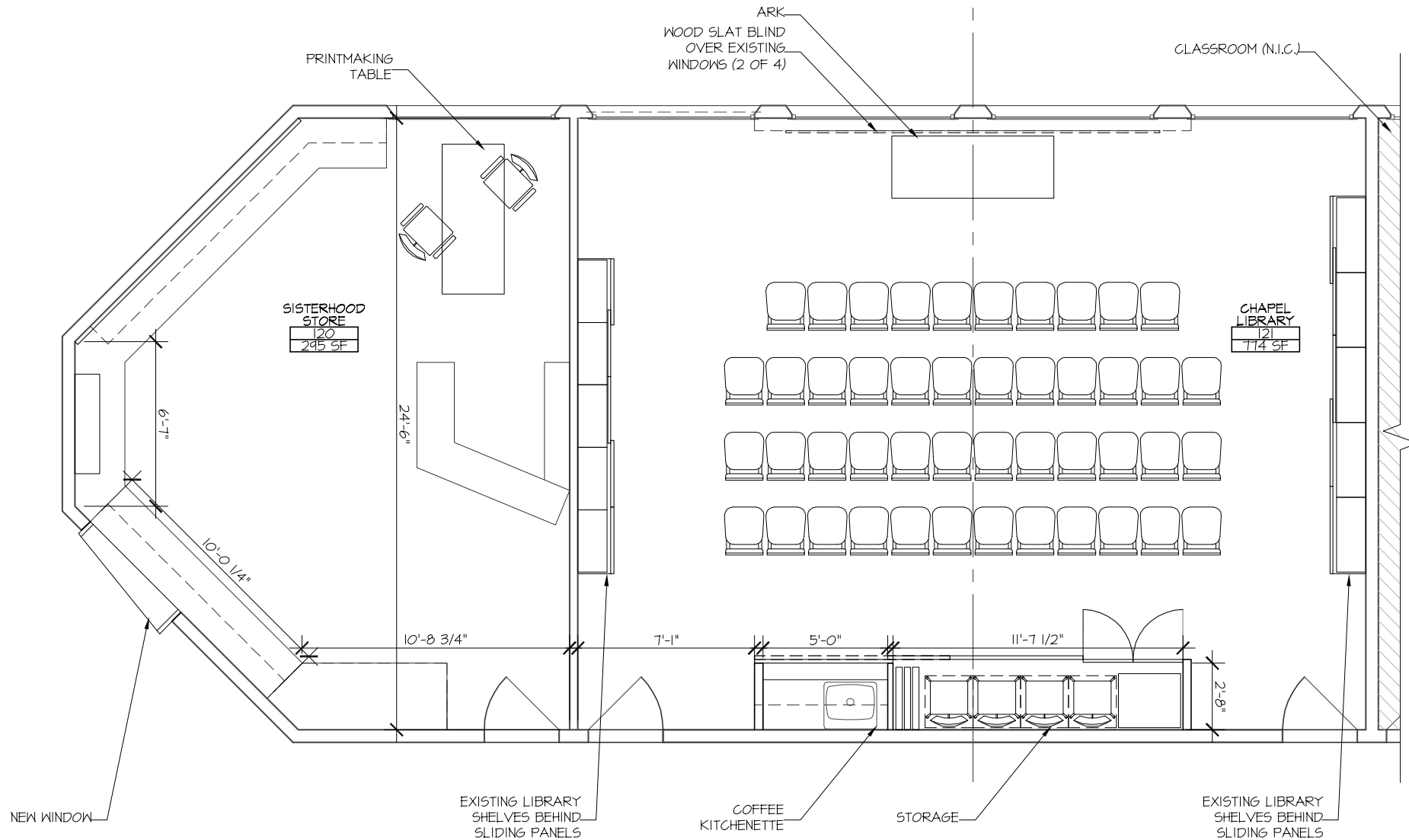
Congregation B'nai Shalom - Sanctuary + Classroom Renovation | Walnut Creek, California



03/03/2008 NOT TO SCALE

KAVA MASSIH ARCHITECTS

2830 Ninth Street | Berkeley, CA 94710
95 Federal | San Francisco, CA 94107



A4.1.3 PARTIAL PLAN: SISTERHOOD AND CHAPEL

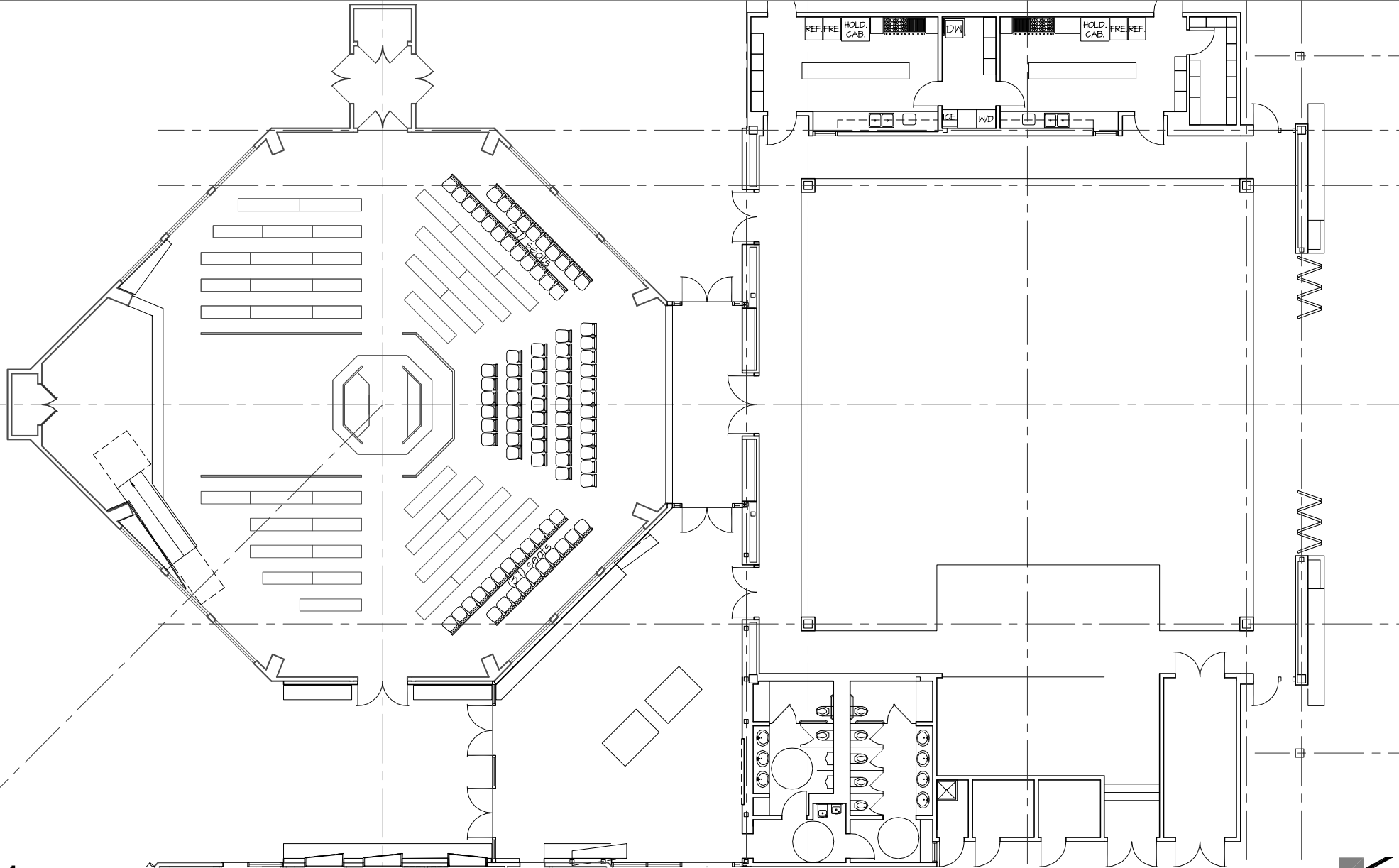
Congregation B'nai Shalom - Sanctuary + Classroom Renovation | Walnut Creek, California



03/03/2008 NOT TO SCALE

KAVA MASSIH ARCHITECTS

2830 Ninth Street | Berkeley, CA 94710
95 Federal | San Francisco, CA 94107



A2.2.1 PLAN: NEW SOCIAL HALL

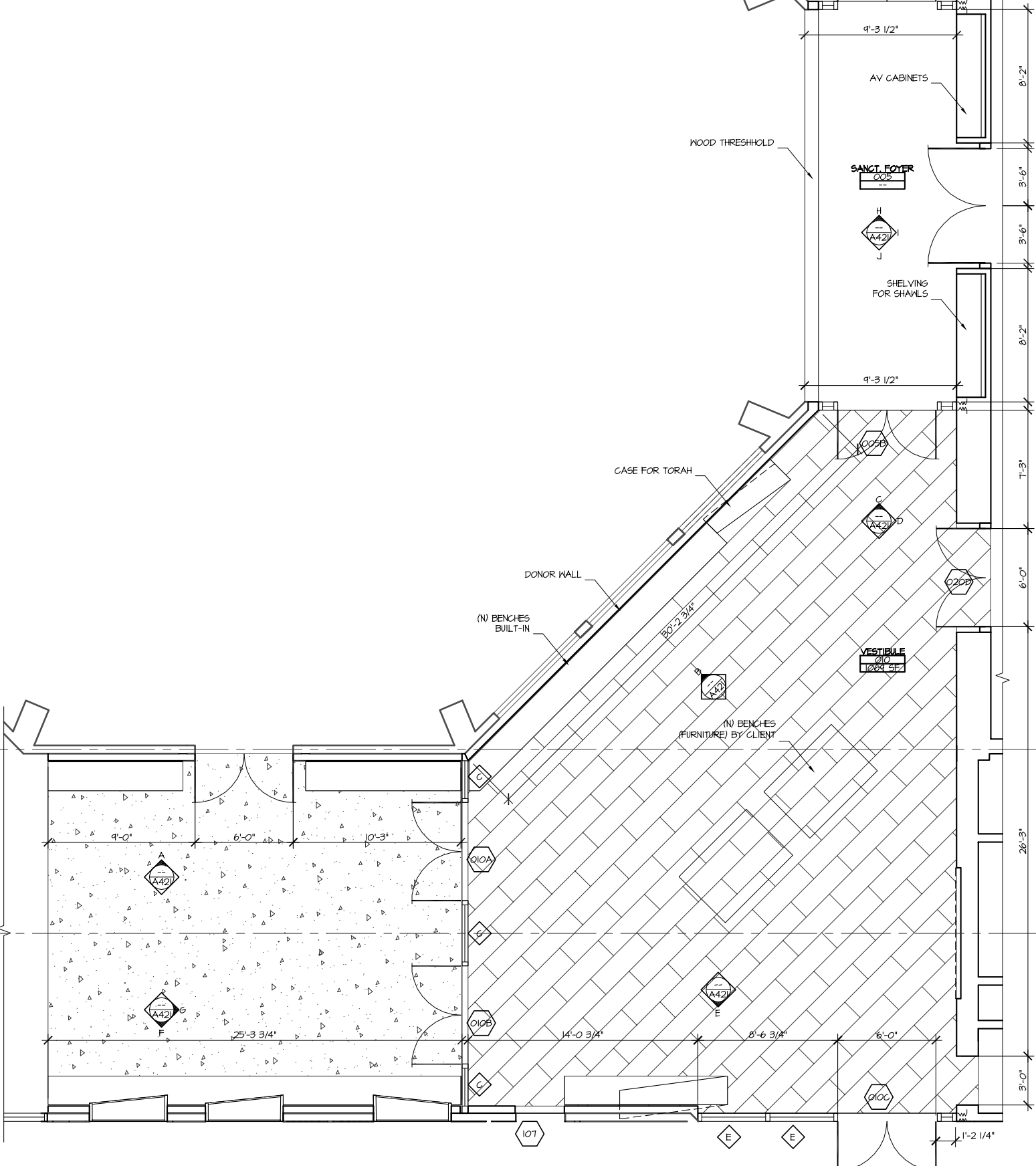
Congregation B'nai Shalom - Sanctuary + Classroom Renovation | Walnut Creek, California

03/03/2008 NOT TO SCALE



KAVA MASSIH ARCHITECTS

2830 Ninth Street | Berkeley, CA 94710
95 Federal | San Francisco, CA 94107

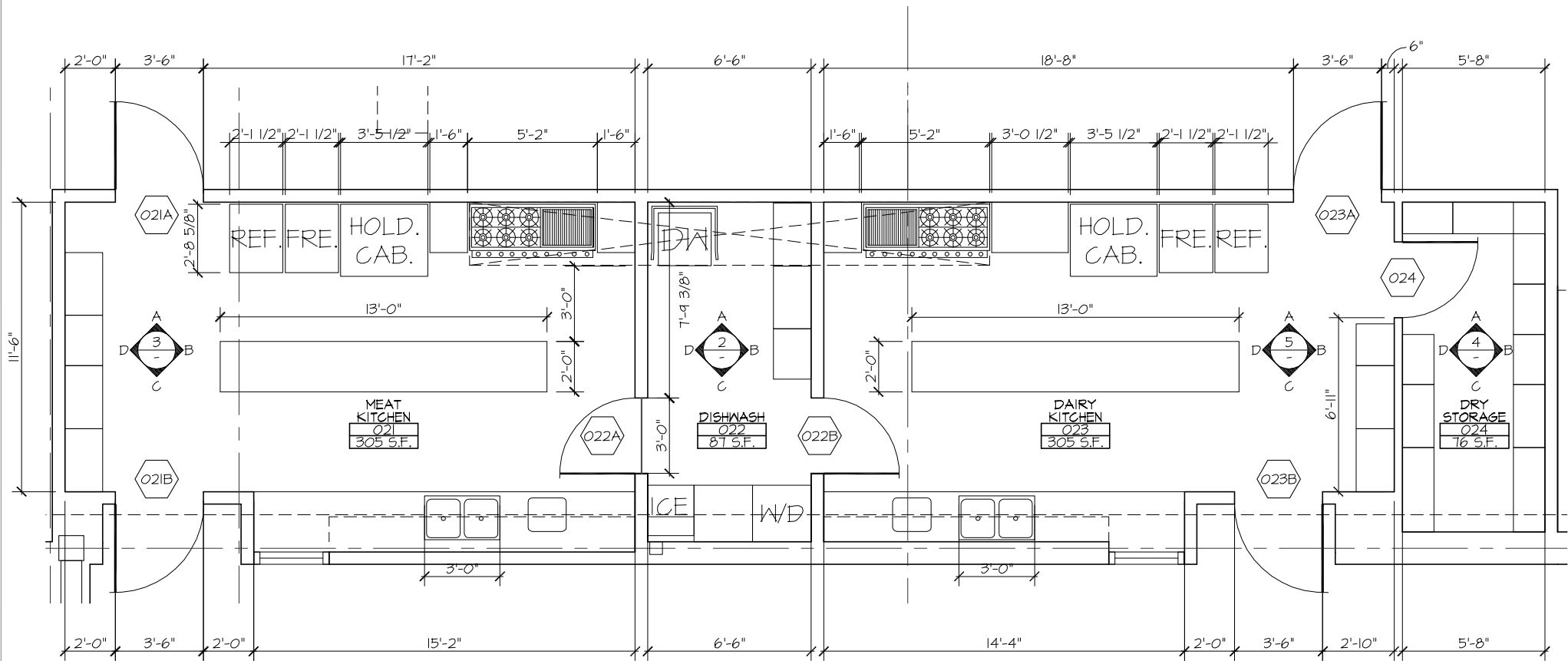


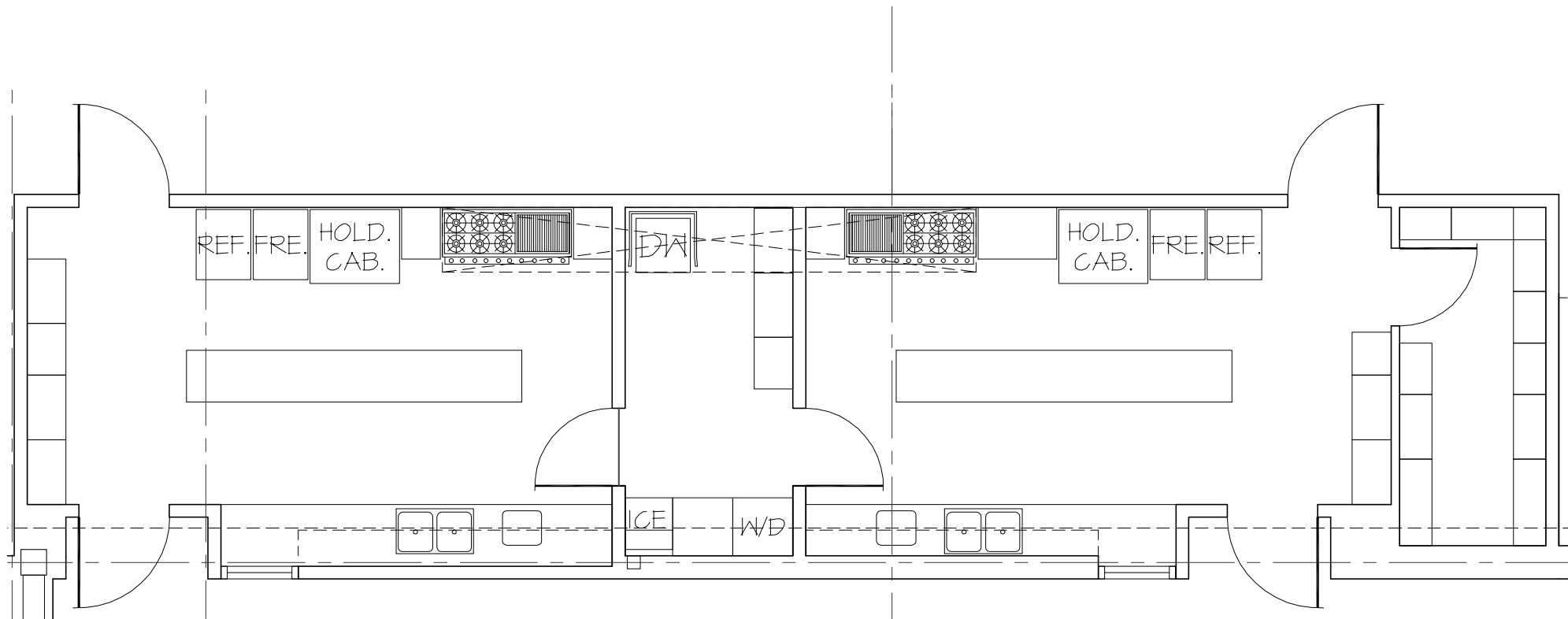
A4.2.1 PARTIAL PLAN: NEW LOBBY

03/03/2008 NOT TO SCALE
 DATE

KAVA MASSIH ARCHITECTS
 2830 Ninth Street | Berkeley, CA 94710
 95 Federal | San Francisco, CA 94107







A4.2.3 PLAN: NEW KITCHENS

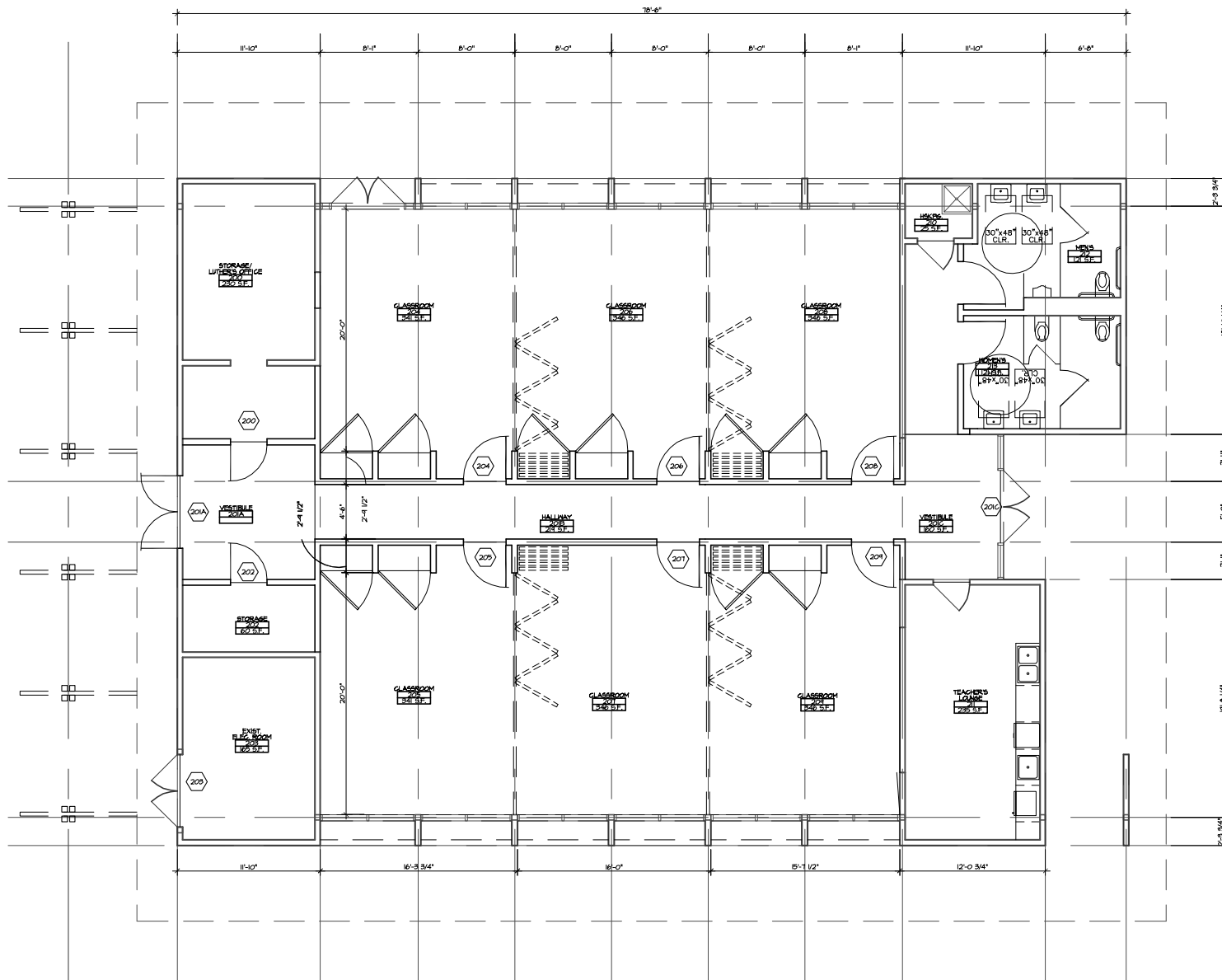
Congregation B'nai Shalom - Sanctuary + Classroom Renovation | Walnut Creek, California



KAVA MASSIH ARCHITECTS

2830 Ninth Street | Berkeley, CA 94710
95 Federal | San Francisco, CA 94107

03/03/2008 NOT TO SCALE



A4.3.1 PLAN: NEW CLASSROOMS

Congregation B'nai Shalom - Sanctuary + Classroom Renovation | Walnut Creek, California



KAVA MASSIH ARCHITECTS

2830 Ninth Street | Berkeley, CA 94710
95 Federal | San Francisco, CA 94107

03/03/2008 NOT TO SCALE